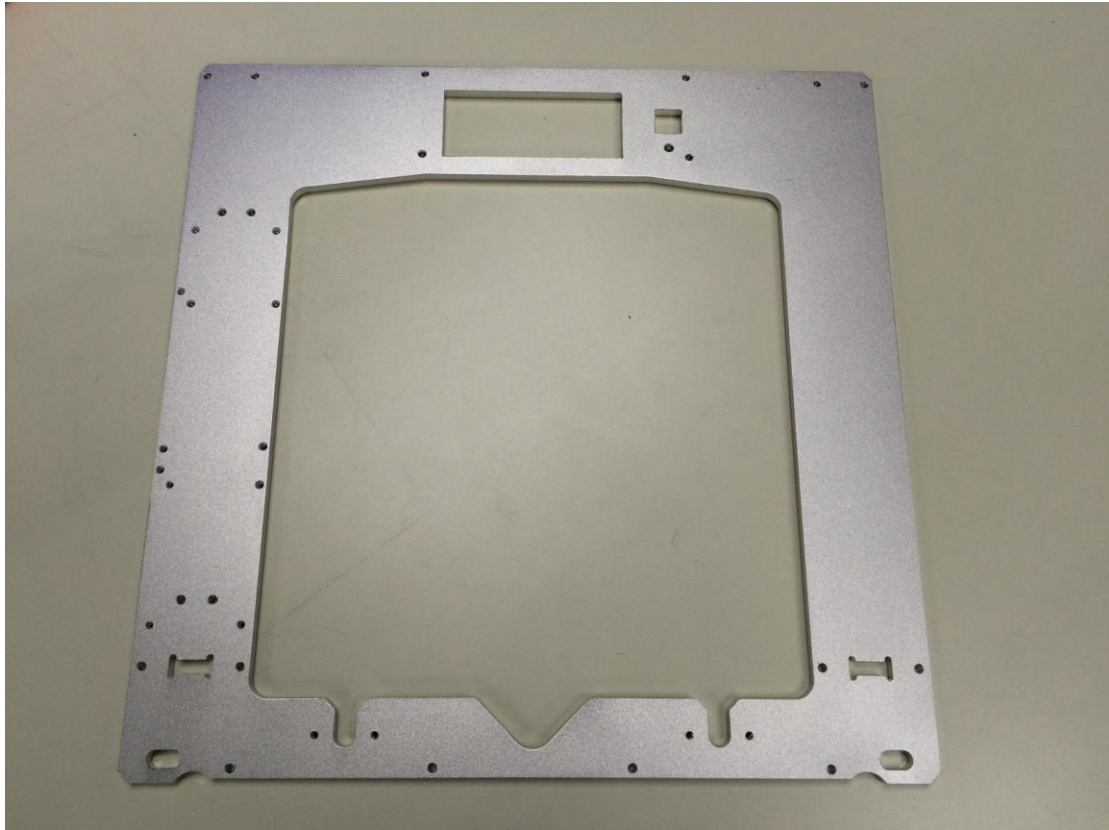
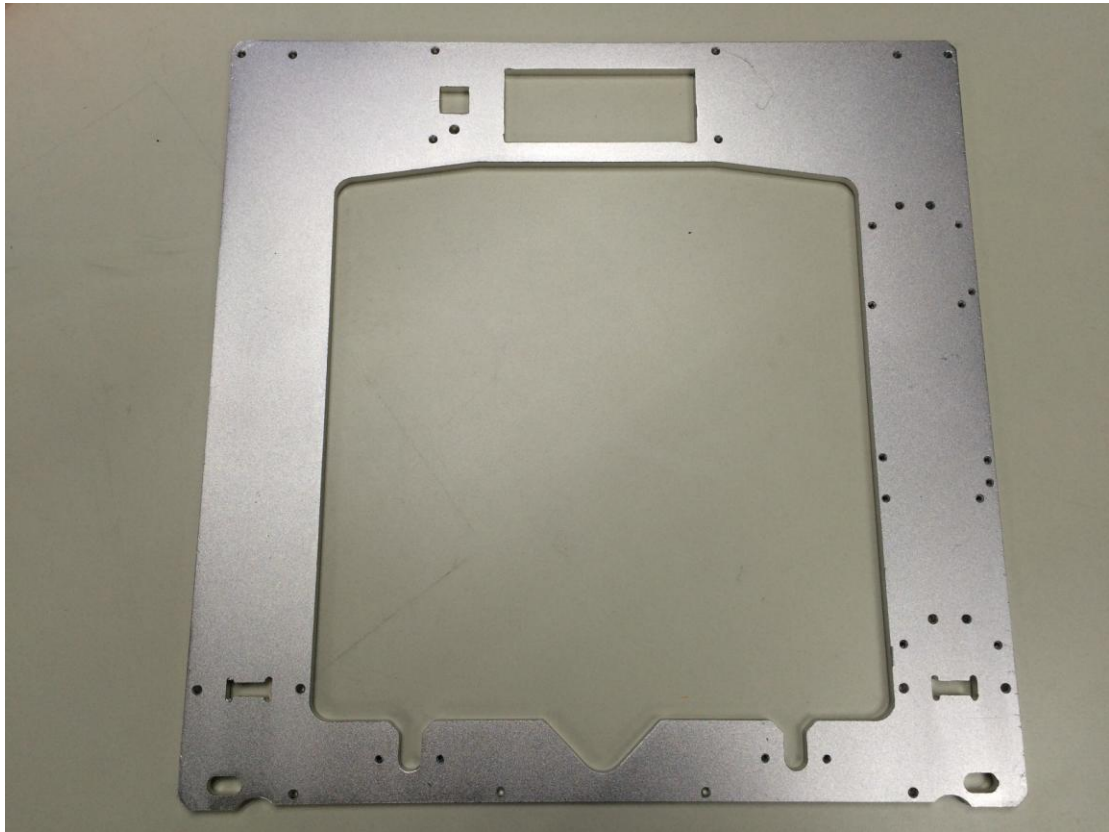


As we did some tiny modification on the design of the main frame, the way to mount the control board will be different, it is mounted on the right side of the printer now. please refer this instruction.

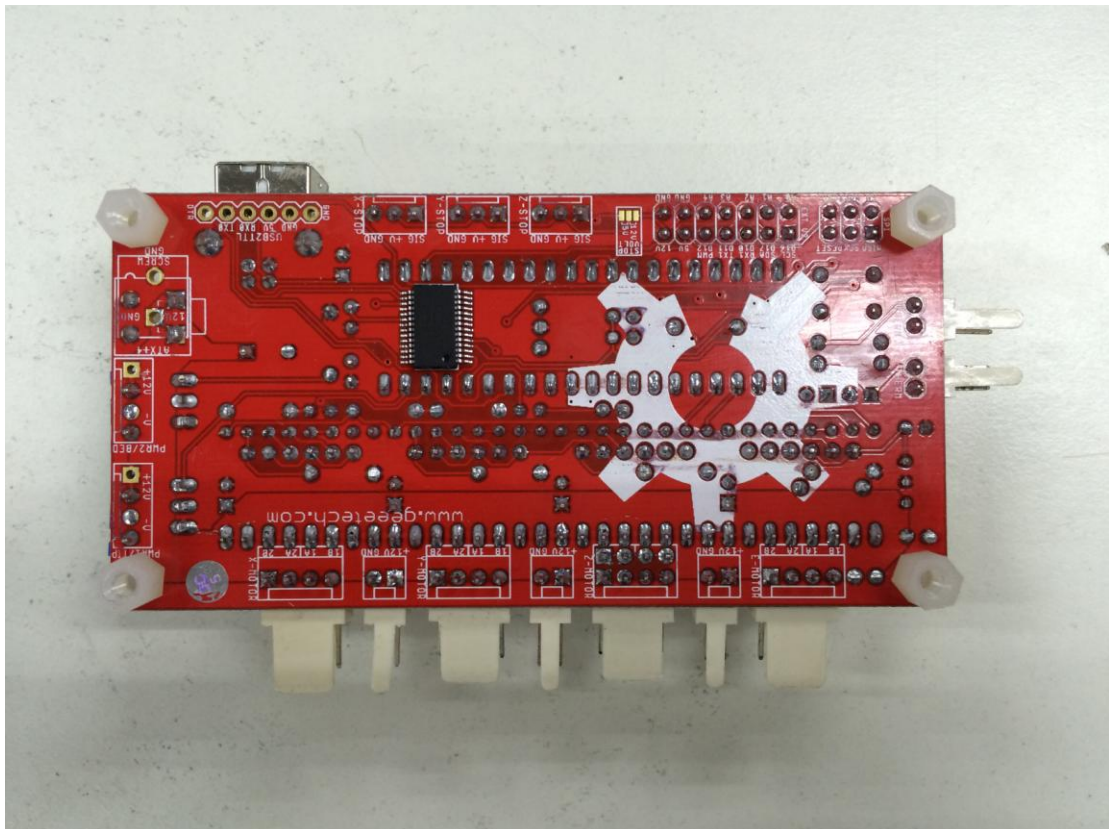


Front side



Back side

1. Insert the aircraft type spacer into the control board from back to front.



2. Thread 2-3 M3 washers on the M3x40mm screw and thread it through the holes on the right side of the main frame from front to back. Do not screw to the end. Leave some space here.



3. Thread the spacer tube on the screws and cover the control board to the spacer, now, you can tighten the screws to the aircraft spacer tightly.



